

Survey Report of Economic Impact in Kutchan Town Due to Coronavirus Disease (COVID-19)

1. BACKGROUND

Since the unexplained pneumonia case was confirmed in Wuhan city, Hubei province, China on December 31, 2019, the number of pneumonia cases has been increasing not only in China but also spreading worldwide. On March 11, 2020, the World Health Organization (WHO) identified the situation as a pandemic. In Japan, the first confirmed cases were reported on January 16 and after the suspension of flights and trains from/to Wuhan on January 23, cancellations were reported by accommodations in various parts of Japan. The first confirmed infected case in Hokkaido was reported on February 14 and after that the number of virus carriers in Hokkaido is increasing. There are 714 cases in Japan and 144 cases in Hokkaido as of March 14 according to Ministry of Health, Labor and Welfare and Hokkaido government.

Events were canceled or postponed now and the governor of Hokkaido declared an state of emergency on February 28, 2020 and insisted that people refrain from going out especially in public places and requested all elementary, junior-high, and high school are closed. Increasing virus carriers in Hokkaido and Japan let other countries decide the travel restrictions to Japan. All these conditions made our economy get worse now.

Kutchan Tourism Association(KTA) conducted the survey to accommodation companies in town and reported it on February 17. At that time, the economic impact seemed only restrictive, but the situation changed and the impact is definitely big. Now we had the survey again and this time the survey was conducted not only for the accommodation but also for all business in town.

2. SURVEY RESULT

ACCOMMODATION

KTA conducted the survey to all 525 accommodation in Kutchan town, which registered in Kutchan Public Health Center. Till March 14, we received answers for 421 accommodations including the 103 answers from last survey. (80.19%)

| # of people in cancellation | | As of Mar. 14 | As of Feb. 16 | # of guests last year |
|------------------------------------|--|---------------|---------------|-----------------------|
| Jan. | % is the ration compared with the guest number last year | 1,278 ppl | 1,048 ppl | 81,100 ppl |
| | | 1.58% | 1.29% | |
| Feb. | % is the ration compared with the guest number last year | 6,107 ppl | 2,212 ppl | 73,900 ppl |
| | | 8.26% | 2.99% | |
| Mar. | % is the ration compared with the guest number last year | 11,350 ppl | 311 ppl | 57,000 ppl |
| | | 19.91% | 0.55% | |

- ※ The number of cancellation might be not only the reason of Coronavirus
- ※ The number by rooms is converted by 2-4 ppl depending on the room size.
- ※ “the number of guests last year” includes all guests reported by Kutchan town.

As of February 16, the total number of canceled guests was 3,571, which was only 1.68% (3,571 / 212,000) of the number of guests during the same period last year. However, as the situation changes, the number of cancellations from February to March has increased significantly and **the total number of canceled guests from January to March is 18,735 which is 8.84%** (18,735 / 212,000) of the number of guests last year. It looks not big ratio, but the above number is just the ratio of cancellation. After Coronavirus outbreaks, there are less reservation and it might show you the huge gap of total guest number in March compared with last year. Further more, this season will end soon without recovering because there is less snow this year, nobody knows when the Coronavirus outbreak will end, and it's already March when it is almost spring season.

| The amount of cancellation | | As of Mar. 14 |
|-----------------------------------|----------------------------|-----------------|
| Jan. | The amount of cancellation | 22,179,600 yen |
| Feb. | The amount of cancellation | 195,596,000 yen |
| Mar. | The amount of cancellation | 345,481,000 yen |

The total cancellation amount from January to March is 563,256,600 yen. However, most of accommodation answered their sales in January is 88-111% and in February is 70-110% compared with last year because Chinese new year is in January and some foreign tourists wanted to over-stay because their countries infected more by Coronavirus. In March, we cannot expect new reservations and it hits directly to our economy. WHO raised Japan as one of the concerned countries, with a strong image of Coronavirus outbreak in Japan, especially in Hokkaido. And one of the members in the Expert Meeting by Japanese government mentioned “Skiing Guesthouse” is one of the specific places with high risk for infection.

According to statistics below, the ratio of tourism industry like accommodation and restaurants in Kutchan town is higher than average and of course the ratio of population engaged in tourism is also higher. It shows easily that the economy in Kutchan town is influenced badly by Coronavirus situation.

(Reference : e-stat -statistics website by Japanese government <https://www.e-stat.go.jp/> As of year 2016)

| # of Offices | C2108 Total (only private office) | C210847 Accommodation, restaurant | Ratio |
|---|--------------------------------------|--------------------------------------|---------------|
| Japan | 5,340,783 | 696,396 | 13.04% |
| Hokkaido | 224,718 | 32,259 | 14.36% |
| Kutchan town | 910 | 194 | 21.32% |
| (Comparison) average of towns which population is 15000~19999 | 742.5254 | 91.71186 | 12.35% |

| # of Employees | C2208 Total (only private office) | C220847 Accommodation, restaurant | Ratio |
|---|--------------------------------------|--------------------------------------|---------------|
| Japan | 56,872,826 | 5,362,088 | 9.43% |
| Hokkaido | 2,165,925 | 211,758 | 9.78% |
| Kutchan town | 6936 | 1,042 | 15.02% |
| (Comparison) average of towns which population is 15000~19999 | 6615.169 | 550.8898 | 8.33% |

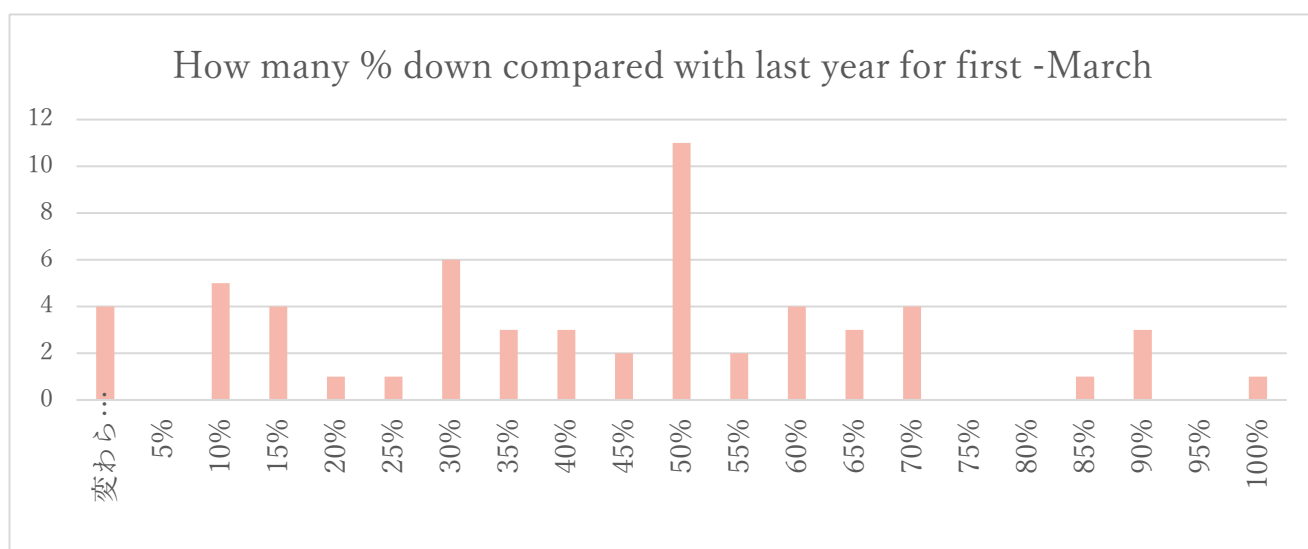
Ratio of reservation compared with last year

| Jan. | Feb. | Mar. | Apr. | May |
|---------|---------|--------|--------------|--------------|
| 90~110% | 80~110% | 35~55% | 10~35、70~75% | 10~15、60~70% |

Restaurant • Activity

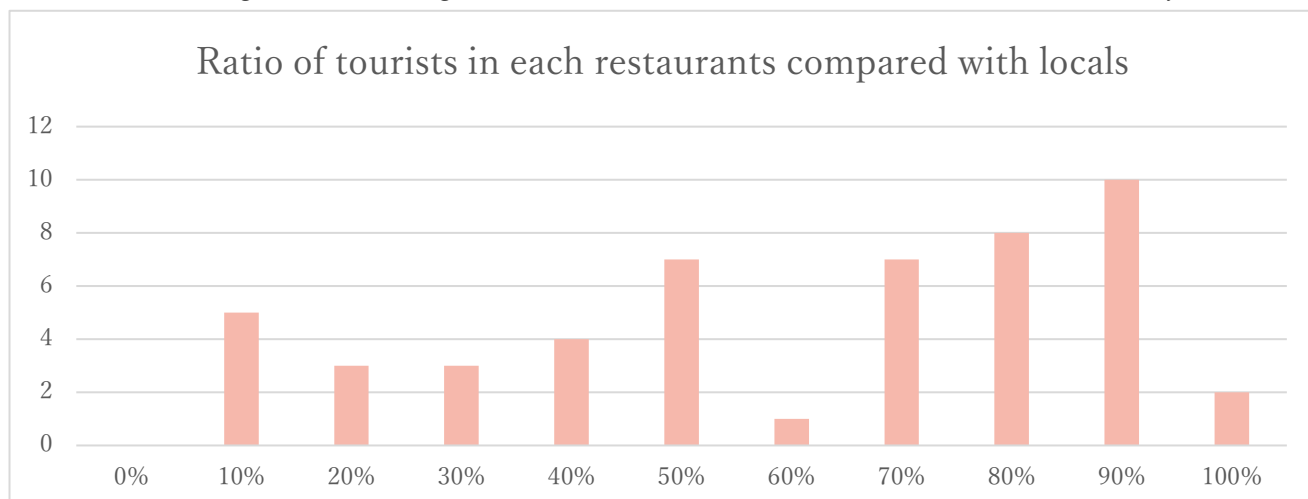
We sent restaurant business operators which registered to Kutchan Public Health Center and activity operators of our members and received 80 answers.

At first, we surveyed their sales and expected amounts in January and February and those gaps compared with last year. Most of operators answered 85-120% in January compared to last year and 70-90% in February and it does not seem the influence by Coronavirus. However, most of them answered as a free comment that the number of guests are decreasing since Feb. 25, it seems big impact on Mar. and Apr., there are No reservation on March, and the sales of March is half compared with last year and more. That's why we have additional survey to restaurant operators by phone about the sales on March. 61 answers be received.



4 operators answered as 「変わらない (SAME)」, but except it, all operators answered more than 10 % down. Those respondents are eligible for applying the special loan for new Coronavirus by the Japan Finance Corporation. Nearly half of respondents say they have fallen by more than 50%.

The tourism industry is one of key industry in Kutchan town and most of restaurants are targeting tourists. Till the number of guests recovering, restaurant business in Kutchan town will be affected badly.



As can be seen from the table below, the number of restaurants per population is higher in Kutchan town. It shows that the number of tourists need to regain in its original state to recover in economy in Kutchan town.

(Reference : e-stat -statistics website by Japanese government <https://www.e-stat.go.jp/> As of year 2016)

※Population for comparison towns : As of year 2015

| # of restaurants per 1000 population | A1101 Population | H6131 Restaurants | # of restaurants per 1000 population |
|--|---------------------|----------------------|---|
| Japan | 126,933,000 | 588,323 | 4.63491 |
| Hokkaido | 5,352,000 | 26,585 | 4.967302 |
| Kutchan town | 15,300 | 132 | 8.627451 |
| (Comparison) average of towns which population is 15000~19999 | 17048.9 | 65.77966 | 3.858293 |

TRANSPORTATION · OTHERS

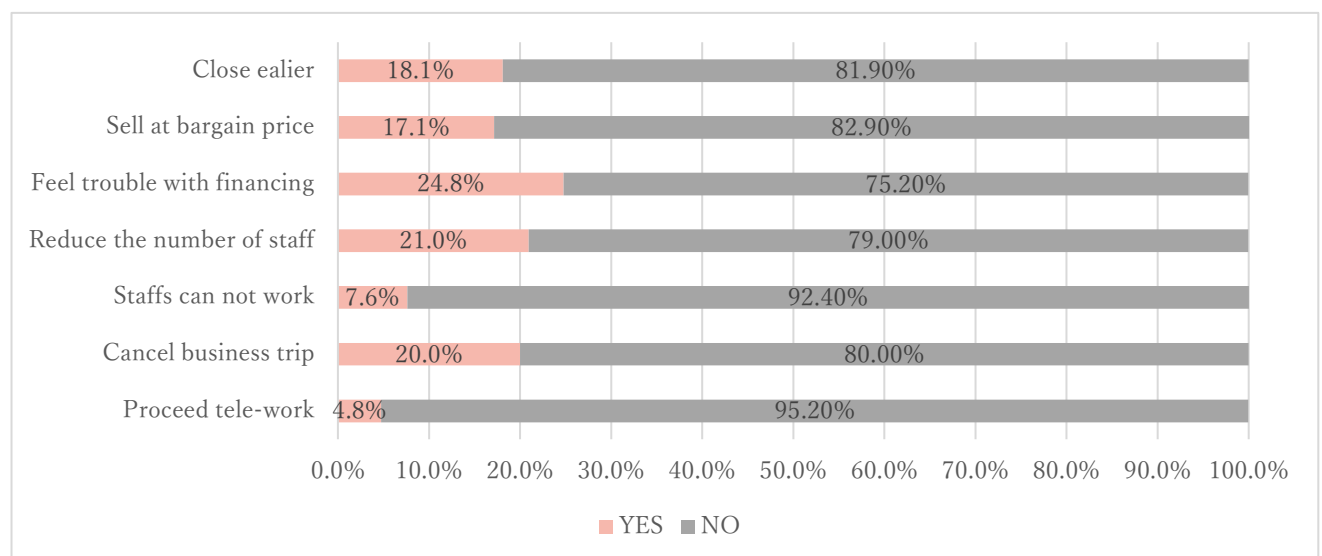
Survey were also conducted on transportation companies and other business of our membership. Most businesses say that there is still no effect on sales in January and February. However after March when some of accommodation and restaurant close earlier and decreasing the guests, other business such as wholesale and retail also worry about the influence. In the construction industry, it might have troubles with importing materials and affect construction work from spring. Although it is not a direct effect on sales, employees have to leave the office due to school closed and cancel their business trips.

In Kutchan town, the ratio of accommodation and food service businesses accounts for 21.32% and some other business supports these businesses like wholesale, retail, linen supply, and cleaning. After March, all economy in Kutchan town clearly have a significant impact.

TOTAL

In this survey, responses were received from 188 operators in all categories.

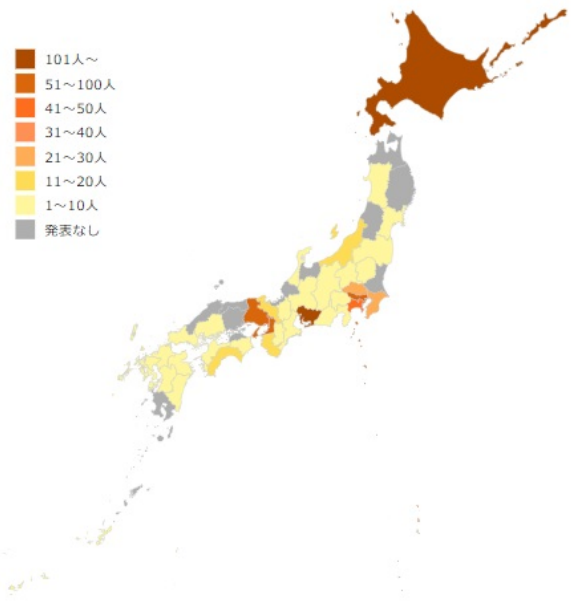
The overall response shows that a lot of operators feel worrying of financing because the end of Coronavirus has not been seen. Also, there are some cases reducing the number of employees by returning winter staff to their countries.



2) Situation in Japan as of March 14 by NHK

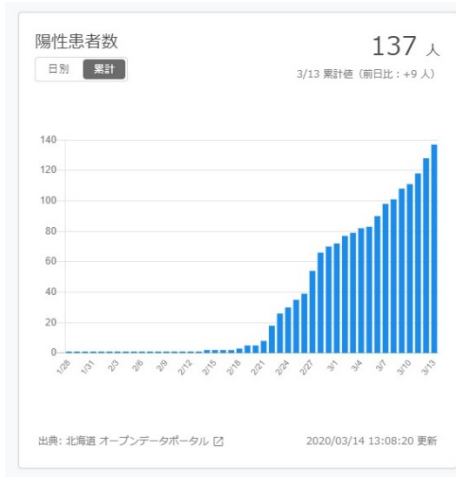
<https://www3.nhk.or.jp/news/special/coronavirus/data/>

| | | | |
|----------|-----|---------------|---|
| Hokkaido | 137 | Nara | 8 |
| Aichi | 114 | Ishikawa | 7 |
| Osaka | 92 | Mie | 7 |
| Tokyo | 77 | Kumamoto | 6 |
| Hyogo | 56 | Gunma | 3 |
| Kanagawa | 50 | Nagano | 3 |
| Chiba | 29 | Shizuoka | 3 |
| Saitama | 22 | Yamaguchi | 3 |
| Kyoto | 17 | Fukuoka | 3 |
| Niigata | 14 | Okinawa | 3 |
| Wakayama | 14 | 5 prefectures | 2 |
| Kochi | 12 | 9 prefectures | 1 |

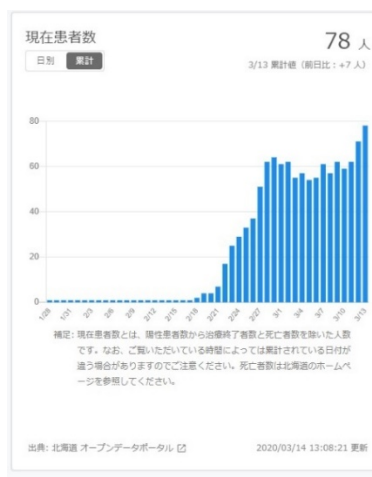


3) Situation in Hokkaido as of March 13 by Hokkaido

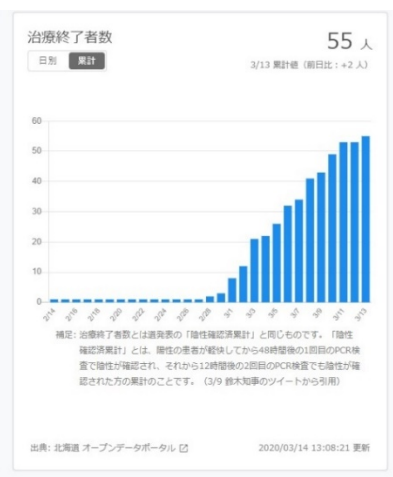
https://stopcovid19.hokkaido.dev/?fbclid=IwAR0b6M5ke2NDoLLYQugPIXZmch_KWheC5wJwlhyZ8QDEAtMqmWHbnP1jExQ



Total number of positive



the number of positive now



the number of previous positive

4) The lists of municipality and villages which population size is similar in Kutchan town

(Population between 15,000 and 19,999) by Japanese Government Statistics

<https://www.e-stat.go.jp/>

A: C2108 the number of all offices

B: C210847 the number of accommodation and restaurant business offices

C: Ratio of the accommodation and restaurant business offices (B/A)

D: C2208 the number of all employees

E: C220847 the number of accommodation and restaurant business employees

F: Ratio of the accommodation and restaurant business employees (E/D)

G: A1101 population

H: H6131 the number of restaurants

| All 118 towns & village (1~37) | C2108 | C210847 | C | C2208 | C220847 | F | A1101 | H6131 |
|-----------------------------------|-------|---------|--------|-------|---------|--------|-------|-------|
| | A | B | | D | E | | G | H |
| HOKKAIDO Tobetsu | 597 | 68 | 11.39% | 5617 | 438 | 7.80% | 17278 | 55 |
| HOKKAIDO Mori | 859 | 104 | 12.11% | 6137 | 466 | 7.59% | 15946 | 80 |
| HOKKAIDO Yakumo | 881 | 131 | 14.87% | 5923 | 545 | 9.20% | 17252 | 96 |
| HOKKAIDO Kutchan | 910 | 194 | 21.32% | 6936 | 1042 | 15.02% | 15018 | 132 |
| HOKKAIDO Yoichi | 912 | 130 | 14.25% | 6881 | 473 | 6.87% | 19607 | 94 |
| HOKKAIDO Shiraoi | 774 | 108 | 13.95% | 6752 | 530 | 7.85% | 17740 | 79 |
| HOKKAIDO Memuro | 734 | 65 | 8.86% | 8547 | 369 | 4.32% | 18484 | 51 |
| HOKKAIDO Kushiro | 997 | 88 | 8.83% | 8884 | 754 | 8.49% | 19833 | 80 |
| HOKKAIDO Bekkai | 706 | 87 | 12.32% | 5406 | 287 | 5.31% | 15273 | 70 |
| AOMORI Fujisaki | 521 | 49 | 9.40% | 4274 | 190 | 4.45% | 15179 | 44 |
| AOMORI Shichinohe | 672 | 66 | 9.82% | 5016 | 221 | 4.41% | 15709 | 59 |
| AOMORI Tohoku | 701 | 85 | 12.13% | 5175 | 306 | 5.91% | 17955 | 74 |
| AOMORI Gonohe | 604 | 56 | 9.27% | 5186 | 153 | 2.95% | 17433 | 46 |
| AOMORI Nanbu | 613 | 38 | 6.20% | 4044 | 151 | 3.73% | 18312 | 24 |
| IWATE Shizukuishi | 718 | 151 | 21.03% | 7018 | 983 | 14.01% | 16981 | 64 |
| IWATE Kanegasaki | 534 | 60 | 11.24% | 9712 | 442 | 4.55% | 15898 | 40 |
| IWATE Yamada | 605 | 68 | 11.24% | 4344 | 335 | 7.71% | 15826 | 51 |
| IWATE Hirono | 618 | 44 | 7.12% | 3659 | 229 | 6.26% | 16693 | 33 |
| MIYAGI Shichigahama | 436 | 31 | 7.11% | 2304 | 133 | 5.77% | 18652 | 18 |
| MIYAGI Wakuya | 593 | 66 | 11.13% | 5283 | 297 | 5.62% | 16701 | 52 |
| AKITA Mitane | 684 | 49 | 7.16% | 4740 | 220 | 4.64% | 17078 | 34 |
| AKITA Ugo | 607 | 59 | 9.72% | 4576 | 242 | 5.29% | 15319 | 51 |
| YAMAGATA Kahoku | 962 | 68 | 7.07% | 6885 | 279 | 4.05% | 18952 | 59 |
| YAMAGATA Kawanishi | 657 | 52 | 7.91% | 4758 | 226 | 4.75% | 15751 | 44 |
| FUKUSHIMA Minami Aizu | 1086 | 217 | 19.98% | 6417 | 838 | 13.06% | 16264 | 91 |
| FUKUSHIMA Inawashiro | 806 | 196 | 24.32% | 5480 | 1271 | 23.19% | 15037 | 81 |
| FUKUSHIMA Aizubange | 856 | 102 | 11.92% | 5755 | 450 | 7.82% | 16303 | 89 |
| FUKUSHIMA Yabuki | 707 | 99 | 14.00% | 7389 | 612 | 8.28% | 17370 | 73 |
| FUKUSHIMA Ishikawa | 862 | 91 | 10.56% | 5997 | 611 | 10.19% | 15880 | 57 |
| FUKUSHIMA Miharu | 660 | 83 | 12.58% | 5569 | 496 | 8.91% | 18304 | 59 |
| IBARAKI Oarai | 919 | 186 | 20.24% | 8206 | 1309 | 15.95% | 16886 | 114 |
| IBARAKI Shirosato | 654 | 40 | 6.12% | 4463 | 137 | 3.07% | 19800 | 35 |
| IBARAKI Daigo | 999 | 111 | 11.11% | 6163 | 603 | 9.78% | 18053 | 85 |
| IBARAKI Miho | 608 | 54 | 8.88% | 6878 | 192 | 2.79% | 15842 | 45 |
| IBARAKI Tone | 388 | 26 | 6.70% | 2384 | 99 | 4.15% | 16313 | 24 |
| TOCHIGI Haga | 637 | 48 | 7.54% | 26305 | 926 | 3.52% | 15189 | 38 |
| TOCHIGI Nakagawa | 785 | 73 | 9.30% | 5887 | 361 | 6.13% | 16964 | 61 |

| All 118 towns & village (38~74) | C2108 | C210847 | C | C2208 | C220847 | F | A1101 | H6131 |
|------------------------------------|-------|---------|--------|-------|---------|--------|-------|-------|
| | A | B | | D | E | | G | H |
| GUNMA Nakanojo | 902 | 174 | 19.29% | 6572 | 921 | 14.01% | 16850 | 110 |
| GUNMA Minakami | 1108 | 288 | 25.99% | 8812 | 2334 | 26.49% | 19347 | 121 |
| GUNMA Itakura | 576 | 37 | 6.42% | 5408 | 170 | 3.14% | 15015 | 35 |
| SAITAMA Namegawa | 556 | 65 | 11.69% | 10360 | 545 | 5.26% | 18212 | 59 |
| SAITAMA Arashiyama | 705 | 74 | 10.50% | 8494 | 390 | 4.59% | 18341 | 66 |
| SAITAMA Yoshimi | 646 | 52 | 8.05% | 7536 | 250 | 3.32% | 19631 | 46 |
| CHIBA Kujukuri | 688 | 98 | 14.24% | 4687 | 637 | 13.59% | 16510 | 73 |
| TOKYO Hinode | 704 | 64 | 9.09% | 9017 | 766 | 8.50% | 17446 | 50 |
| KANAGAWA Oi | 687 | 89 | 12.95% | 6493 | 774 | 11.92% | 17033 | 79 |
| KANAGAWA Kaisei | 649 | 71 | 10.94% | 6830 | 485 | 7.10% | 17013 | 54 |
| ISHIKAWA Nakanoto | 745 | 55 | 7.38% | 4664 | 256 | 5.49% | 17571 | 50 |
| ISHIKAWA Noto | 1082 | 113 | 10.44% | 5811 | 488 | 8.40% | 17568 | 74 |
| FUKUI Eiheiji | 797 | 69 | 8.66% | 9454 | 364 | 3.85% | 19883 | 56 |
| FUKUI Wakasa | 750 | 160 | 21.33% | 5684 | 779 | 13.71% | 15257 | 53 |
| YAMANASHI Ichikawamisato | 687 | 57 | 8.30% | 4730 | 203 | 4.29% | 15673 | 47 |
| YAMANASHI Fujikawa | 668 | 74 | 11.08% | 5088 | 470 | 9.24% | 15294 | 57 |
| YAMANASHI Showa | 1530 | 268 | 17.52% | 18104 | 2544 | 14.05% | 19505 | 248 |
| NAGANO Karuizawa | 1643 | 495 | 30.13% | 12849 | 4773 | 37.15% | 18994 | 272 |
| NAGANO Miyota | 557 | 111 | 19.93% | 5976 | 450 | 7.53% | 15184 | 82 |
| NAGANO Tatsuno | 863 | 91 | 10.54% | 7640 | 390 | 5.10% | 19770 | 74 |
| NAGANO Minamiminowa | 572 | 38 | 6.64% | 6324 | 276 | 4.36% | 15063 | 27 |
| GIFU Godo | 702 | 71 | 10.11% | 7007 | 308 | 4.40% | 19282 | 62 |
| GIFU Kitagata | 772 | 137 | 17.75% | 5457 | 937 | 17.17% | 18169 | 127 |
| GIFU Mitake | 644 | 63 | 9.78% | 7284 | 350 | 4.81% | 18111 | 55 |
| SHIZUOKA Oyama | 709 | 107 | 15.09% | 7538 | 817 | 10.84% | 19497 | 73 |
| SHIZUOKA Mori | 831 | 56 | 6.74% | 8671 | 319 | 3.68% | 18528 | 45 |
| AICHI Toyoyama | 913 | 113 | 12.38% | 13755 | 1104 | 8.03% | 15177 | 104 |
| AICHI Minamichita | 1228 | 276 | 22.48% | 7964 | 2138 | 26.85% | 18707 | 111 |
| MIE Tamaki | 480 | 46 | 9.58% | 7264 | 365 | 5.02% | 15431 | 35 |
| MIE Kihoku | 967 | 152 | 15.72% | 5578 | 496 | 8.89% | 16338 | 125 |
| KYOTO Oyamazaki | 401 | 47 | 11.72% | 5146 | 365 | 7.09% | 15181 | 35 |
| KYOTO Kumiyama | 1579 | 110 | 6.97% | 23447 | 1050 | 4.48% | 15805 | 88 |
| OSAKA Toyono | 311 | 17 | 5.47% | 1986 | 81 | 4.08% | 19934 | 14 |
| OSAKA Tadaoka | 580 | 55 | 9.48% | 5962 | 234 | 3.92% | 17298 | 45 |
| OSAKA Misaki | 452 | 47 | 10.40% | 3597 | 264 | 7.34% | 15938 | 37 |
| OSAKA Kanan | 491 | 39 | 7.94% | 4787 | 141 | 2.95% | 16126 | 32 |
| HYOGO Fukusaki | 971 | 84 | 8.65% | 11729 | 696 | 5.93% | 19738 | 71 |

| All 118 towns & village (75~111) | C2108 | C210847 | C | C2208 | C220847 | F | A1101 | H6131 |
|-------------------------------------|-------|---------|--------|-------|---------|--------|-------|-------|
| | A | B | | D | E | | G | H |
| HYOGO Kamigori | 641 | 57 | 8.89% | 4454 | 256 | 5.75% | 1524 | 48 |
| HYOGO Sayo | 910 | 84 | 9.23% | 6862 | 362 | 5.28% | 17510 | 63 |
| HYOGO Kami | 1183 | 243 | 20.54% | 6562 | 1136 | 17.31% | 18070 | 58 |
| NARA Heguri | 416 | 36 | 8.65% | 3002 | 232 | 7.73% | 18883 | 30 |
| NARA Kawai | 453 | 52 | 11.48% | 4202 | 518 | 12.33% | 17941 | 42 |
| NARA Oyodo | 757 | 71 | 9.38% | 5787 | 339 | 5.86% | 18069 | 61 |
| WAKAYAMA Katsuragi | 812 | 85 | 10.47% | 6239 | 471 | 7.55% | 16992 | 68 |
| WAKAYAMA Nachikatsuura | 1032 | 208 | 20.16% | 5945 | 1216 | 20.45% | 15682 | 166 |
| WAKAYAMA Kushimoto | 1020 | 132 | 12.94% | 4991 | 470 | 9.42% | 16558 | 91 |
| TOTTORI Yazu | 519 | 29 | 5.59% | 3332 | 239 | 7.17% | 16985 | 23 |
| TOTTORI Yurihama | 559 | 63 | 11.27% | 3957 | 540 | 13.65% | 16550 | 35 |
| TOTTORI Kotoura | 722 | 71 | 9.83% | 5873 | 370 | 6.30% | 17416 | 61 |
| TOTTORI Daisen | 525 | 73 | 13.90% | 4303 | 421 | 9.78% | 16470 | 30 |
| HIROSHIMA Kitahiroshima | 1151 | 124 | 10.77% | 10631 | 660 | 6.21% | 18918 | 78 |
| HIROSHIMA Sera | 901 | 85 | 9.43% | 6338 | 372 | 5.87% | 16337 | 73 |
| YAMAGUCHI Suo-oshima | 862 | 73 | 8.47% | 4616 | 398 | 8.62% | 17199 | 44 |
| YAMAGUCHI Tabuse | 506 | 38 | 7.51% | 4182 | 151 | 3.61% | 15317 | 28 |
| TOKUSHIMA Matsushige | 593 | 69 | 11.64% | 8518 | 529 | 6.21% | 15204 | 51 |
| KAGAWA Utazu | 845 | 113 | 13.37% | 10349 | 1157 | 11.18% | 18952 | 96 |
| KAGAWA Manno | 751 | 68 | 9.05% | 5867 | 287 | 4.89% | 18377 | 57 |
| EHIME Uchiko | 871 | 94 | 10.79% | 5392 | 331 | 6.14% | 16742 | 75 |
| KOCHI Shimanto | 919 | 137 | 14.91% | 5729 | 480 | 8.38% | 17325 | 106 |
| FUKUOKA Onga | 884 | 103 | 11.65% | 7709 | 472 | 6.12% | 18877 | 84 |
| FUKUOKA Kurate | 545 | 48 | 8.81% | 6246 | 257 | 4.11% | 16004 | 36 |
| FUKUOKA Tachiarai | 529 | 31 | 5.86% | 4835 | 161 | 3.33% | 15138 | 24 |
| FUKUOKA Kawasaki | 617 | 57 | 9.24% | 4501 | 270 | 6.00% | 16789 | 49 |
| FUKUOKA Chikujo | 650 | 64 | 9.85% | 3854 | 245 | 6.36% | 18587 | 50 |
| SAGA Yoshinogari | 478 | 73 | 15.27% | 7115 | 595 | 8.36% | 16411 | 63 |
| SAGA Kiyama | 61 | 48 | 78.69% | 7634 | 350 | 4.58% | 17501 | 41 |
| NAGASAKI Shinkamigoto | 1165 | 145 | 12.45% | 5926 | 586 | 9.89% | 19718 | 98 |
| KUMAMOTO Nagasu | 510 | 36 | 7.06% | 7859 | 299 | 3.80% | 15889 | 25 |
| KUMAMOTO Mifune | 665 | 38 | 5.71% | 5357 | 164 | 3.06% | 17237 | 24 |
| KUMAMOTO Yamato | 745 | 92 | 12.35% | 4614 | 401 | 8.69% | 15149 | 70 |
| KUMAMOTO Ashikita | 625 | 65 | 10.40% | 5393 | 390 | 7.23% | 17661 | 45 |
| KUMAMOTO Asagiri | 668 | 67 | 10.03% | 5022 | 283 | 5.64% | 15523 | 56 |
| OITA Kusu | 857 | 119 | 13.89% | 5488 | 403 | 7.34% | 15823 | 107 |
| MIYAZAKI Kunitomi | 752 | 69 | 9.18% | 7688 | 231 | 3.00% | 19606 | 64 |

| All 118 towns & village (112~118) | C2108 | C210847 | C | C2208 | C220847 | F | A1101 | H6131 |
|--------------------------------------|-------|---------|--------|-------|---------|--------|-------|-------|
| | A | B | | D | E | | G | H |
| MIYAZAKI Shintomi | 644 | 65 | 10.09% | 4861 | 290 | 5.97% | 17373 | 53 |
| MIYAZAKI Kawaminami | 610 | 59 | 9.67% | 6037 | 243 | 4.03% | 16109 | 53 |
| MIYAZAKI Kadogawa | 713 | 52 | 7.29% | 5790 | 231 | 3.99% | 18183 | 35 |
| KAGOSHIMA Kimotsuki | 730 | 72 | 9.86% | 5464 | 365 | 6.68% | 15664 | 53 |
| OKINAWA Kitanakagusuku | 771 | 124 | 16.08% | 6974 | 1532 | 21.97% | 16148 | 112 |
| OKINAWA Nakagusuku | 683 | 41 | 9.86% | 7009 | 379 | 6.68% | 19454 | 36 |
| OKINAWA Yonabaru | 760 | 143 | 18.82% | 5428 | 777 | 14.31% | 18410 | 126 |

5) Special Loan for New Coronavirus Infectious Disease by Japan Finance Corporation

https://www.jfc.go.jp/n/finance/search/covid_19_m.html (Written only in Japanese)

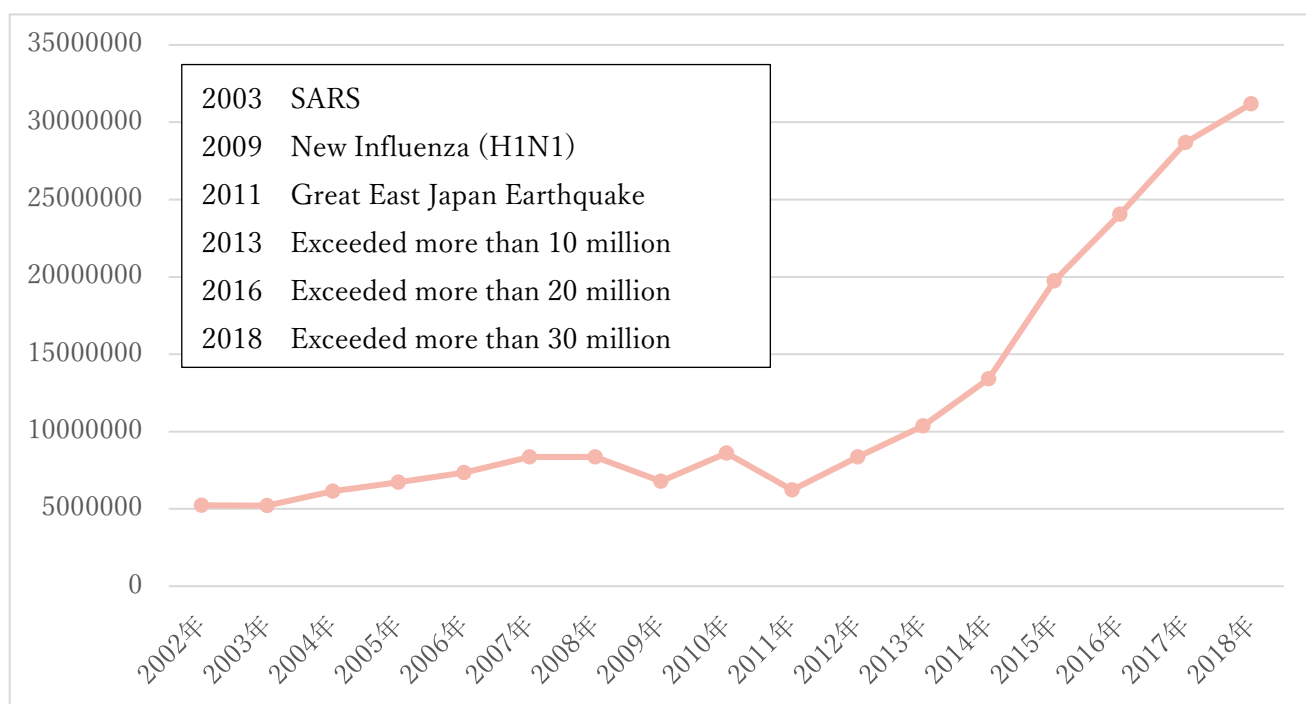
THE COMPANY WHICH MAY GET A LOAN : Those who are temporarily affected by the new Coronavirus infection and are expecting a temporary deterioration in business conditions. And those who is either conditions below and are expected to recover in the medium to long term.

1. Sales for the last month have decreased by 5 % or more compared to the same period of the previous year or 2 years ago.
2. For those who have been in business for 3 months – less than 1 year and 1 month, those whose sales for the last month have decreased by 5 % or more compared to any of the following:
 - (1) Average sales over the past 3 months (including the last one month)
 - (2) Sales in December, 2019
 - (3) Average sales from October to December, 2019

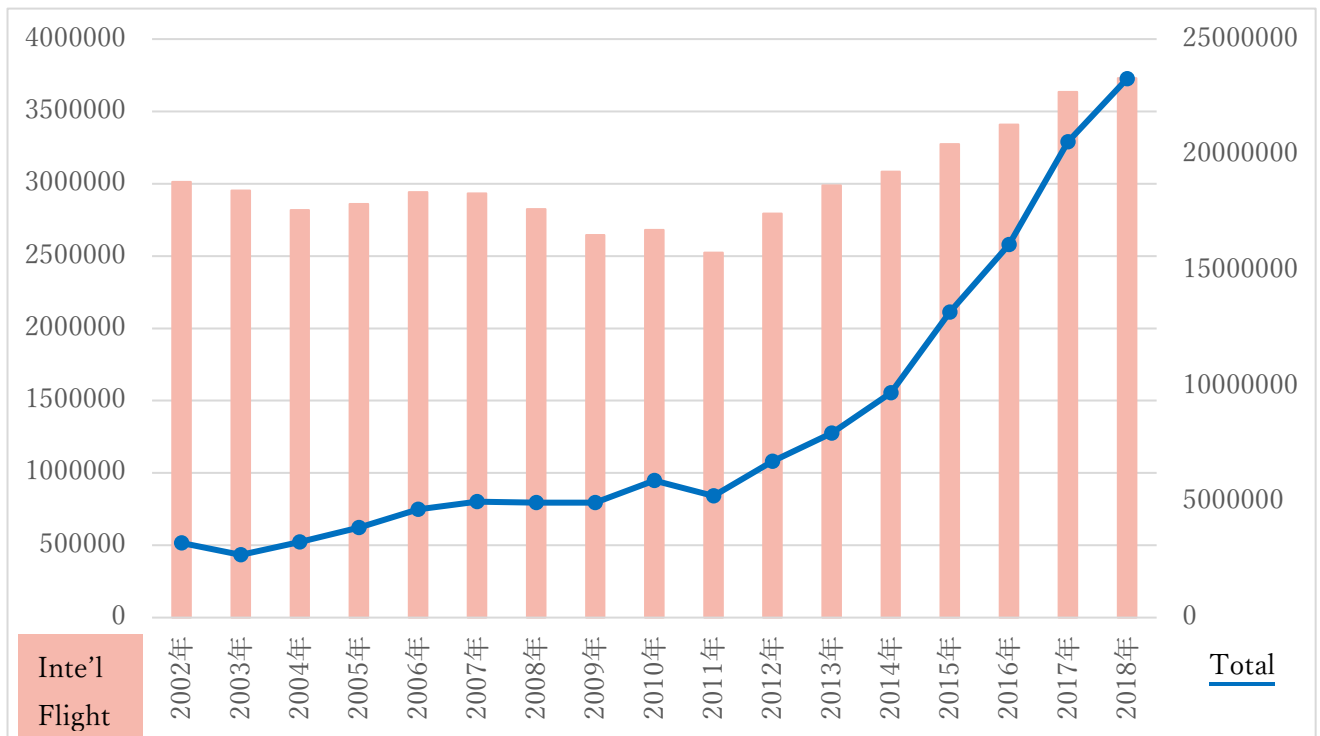
※There are various types of economic support. Check it on Kutchan town website.

<https://www.town.kutchan.hokkaido.jp/work-industry/jigyoumukejyouhou/3396/>

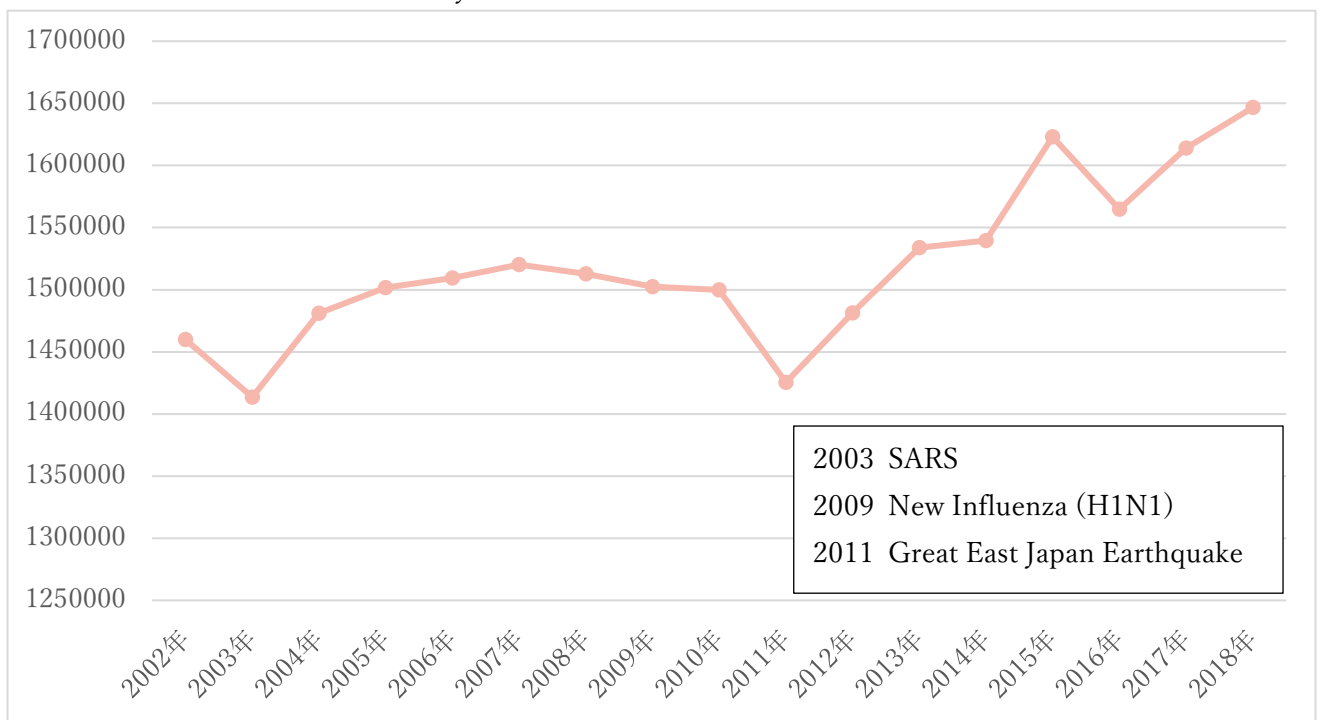
6) Number of foreign visitors to Japan by Japan National Tourism Organization (JNTO)



7) Number of air passengers at New Chitose Airport by New Chitose Airport Terminal Building



8) Number of visitors to Kuthan town by Kutchan town



9) “Categorization of disasters that had a great impact on the tourism field in Japan and overseas in the past and survey on reconstruction process in the tourism field in each countries” by Japan Tourism Agency reported on March, 2012 (Written in Japanese)

<http://www.mlit.go.jp/common/000215576.pdf>

10) “Manual of infectious disease reputation damage in the tourism field” by Japan Tourism Agency released on December, 2009 (Written in Japanese)

<https://www.mlit.go.jp/common/000055710.pdf>